

Accessibility Guide for Durlston Country Park NNR



Welcome

Durlston is the perfect place to start exploring Dorset's internationally acclaimed coast and countryside. With stunning sea views, superb coastal paths, exciting events and amazing wildlife, there's plenty to see and do. Durlston is carefully managed for conservation and public enjoyment by Dorset Council.

Durlston Castle is well worth exploring. Enjoy interactive displays, relax on the rooftop terrace or check out live wildlife cameras and the latest dolphin sightings. The Castle offers superb access for visitors with disabilities.

A Ranger is always on hand to make sure you get the most out of your day and entry to the castle and park is free (car parking charges apply).

Watch the video: [Tramper at Durlston](#)

At a Glance



Level Access

- There is level access from the main entrance to:
 - Dining Table
 - Main Reception
 - Reception Accessible Toilet
 - 2nd Floor Accessible Toilet
 - Gallery Accessible Toilet
 - Durlston Castle Shop
 - Gallery
 - Durlston National Nature Reserve

- There is level access from the car park to:
 - Learning Centre Picnic Area

Hearing

- The fire alarm has flashing lights.
- We have a hearing loop in Main Reception, the Rock Room, the Gallery and the Cinema room.
- Some staff have BSL and disability awareness training.

Visual

- Glass doors have contrast markings.
- The walls and the doors have high colour contrast.
- Some parts of the venue have low lighting.
- We have display information in BSL.

General

- Some staff have disability awareness training.

Getting here

Durlston Castle
Lighthouse Road
Swanage
BH19 2JL

Travel by public transport

- You can get to Swanage by bus – from Poole no 42, or Bournemouth no 50. Durlston Country Park NNR is 1.5 miles away.

Travel by taxi

- You can get a taxi from Swanage bus station. Some taxis are wheelchair accessible.

Parking

- There are accessible parking spaces.
- Parking is not free.
- There is a drop-off point at the main entrance. The drop-off point has a dropped kerb.
- From the car park to the entrance, there is level access. There is a permanent ramp.
- The path is sloped.
- Drop off outside the castle is available if required.
- An assistance call point is available in the main car park.

Arrival

Path to main entrance

- From the street to the main entrance, there is level access.
- The path is 1400mm wide, or more.

Main entrance

- The main entrance has level access.
- The door is 1320mm wide.
- The door has a push button to open it.
- The timeline provides a hard surfaced gently sloping zigzag path with handrails to the main entrance of the Castle from the car parks.
- The Castle has automatically opening doors from outside and push button automatic doors from inside.
- A Visual Story designed as a guide for people with Autism is available on the access page of our website.
- Watch the video: Accessibility guide to Durlston Castle

Getting around inside

Visual Impairment - General Information

- We have contrast markings on all glass doors and high colour contrast between walls and doorframes.
- Some parts of the venue have low lighting.

Lift

- We have 3 lifts.
- You can get a lift to all floors.

Lifts to all floors

- The lift is a platform lift.
- The lift door is 880mm wide.
- The lift is 940mm wide. The lift is 1480mm deep.
- The lift says the floor number at each floor.
- The lift buttons have raised numbers or letters.
- The lift shows the floor number, at each floor.
- With all lifts, please keep button pressed until you arrive at your destination floor.



Lift

Ticket/ information desk

Main Reception

- From the main entrance to the desk, there is level access. The desk has a low section.

- There is no charge for visiting



Durlston Main Reception

Things to See and Do

- We have display information in: BSL.

 *Public toilet*

Reception Accessible Toilet

- There is a public toilet for disabled visitors.
- From the main entrance to the public toilet, there is level access. The toilet door is 820mm wide.



Accessible Toilet

 *Public toilet*

2nd Floor Accessible Toilet

- There is a public toilet for disabled visitors.
- From the main entrance to the public toilet, there is level access. The toilet door is 820mm wide.

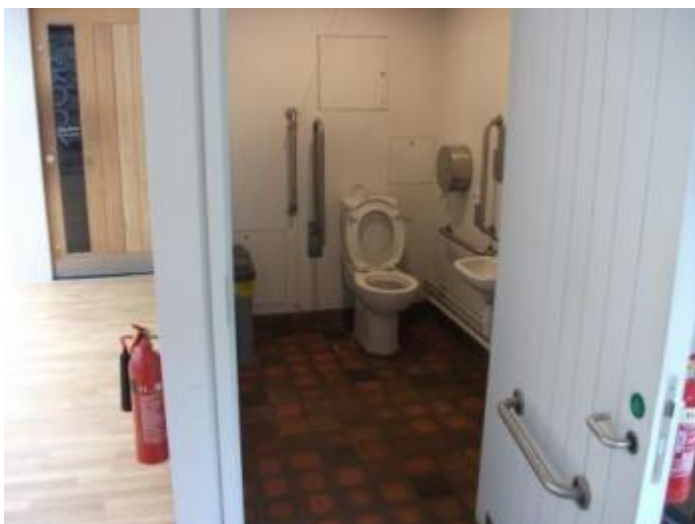


Accessible Toilet

Public toilet

Gallery Accessible Toilet

- There is a public toilet for disabled visitors.
- From the main entrance to the public toilet, there is level access. The toilet door is 820mm wide.



Accessible Toilet

Shop

Durlston Castle Shop

- From the main entrance to the shop, there is level access. The door is 1320mm wide.
- The route through the shop is 800mm wide, or more.

Place to eat and drink

Seventh Wave Cafe

- From the main entrance to the dining area, there is level access. The door is 1320mm wide.
- To get to a table, there are no steps.
- The route through the dining area is 800mm wide, or more.
- There is background music.
- The table and plates have high colour contrast.

- We cater for sugar free (diabetic), vegetarian, gluten free (celiacs), lactose free (dairy free), nut free, low fat and vegan specific diets.
- For any further enquiries regarding the cafe, call 01929 421111

Gallery

- From the main entrance to this area, there is level access. The door is 8200mm wide.



Gallery

Getting around outside



Designated Walking Trail

The Lighthouse Road



Anvil Point Lighthouse

- The trail is 1000metres long. The trail has a hard surface. The trail is sloped. The trail has seats.



Picnic Area

Learning Centre Picnic Area

- From the car park to the picnic area, there is level access. The entrance is 1000mm wide.
- Some tables have space for wheelchair users. You can bring your own food to the picnic area.

- Several other picnic areas are available throughout the park.

Durlston National Nature Reserve

- From the main entrance to this area, there is level access.
- Durlston covers 340 acres with a wide variety of habitats and terrain.
- Watch the video: Durlston fly-by



Aerial Photograph of Durlston

Customer care support

Accessibility equipment

Customer care support

Accessibility equipment

- We provide wheelchairs. Wheelchairs are free.
- We have a hearing loop in Main Reception, the Rock Room, the Gallery and the Cinema room.
- We provide electric trampers to explore our trails and an all terrain K2 Trekinetic offroad manual wheelchair. A manual wheelchair for use around Durlston Castle. We also provide glideboards in reception.
- We have an area to charge mobility scooters and battery powered wheelchairs.
- Mobility vehicles can be charged on request at the main reception of The Castle.
- You can hire mobility equipment from Purbeck Mobility by calling 01929 552623.
- Dog bins are provided at various locations around the park.

Emergency evacuation procedures

- We have emergency evacuation procedures for disabled visitors.
- The fire alarm has flashing lights.

Customer care support

- Some staff have disability awareness training.
- Some staff have BSL training.



- We have other services for people with accessibility requirements.
- We have a BSL video tour available for hire from the main reception desk at Durlston Castle. Please ask for it at reception.
-

Guide last updated: 1 February 2025